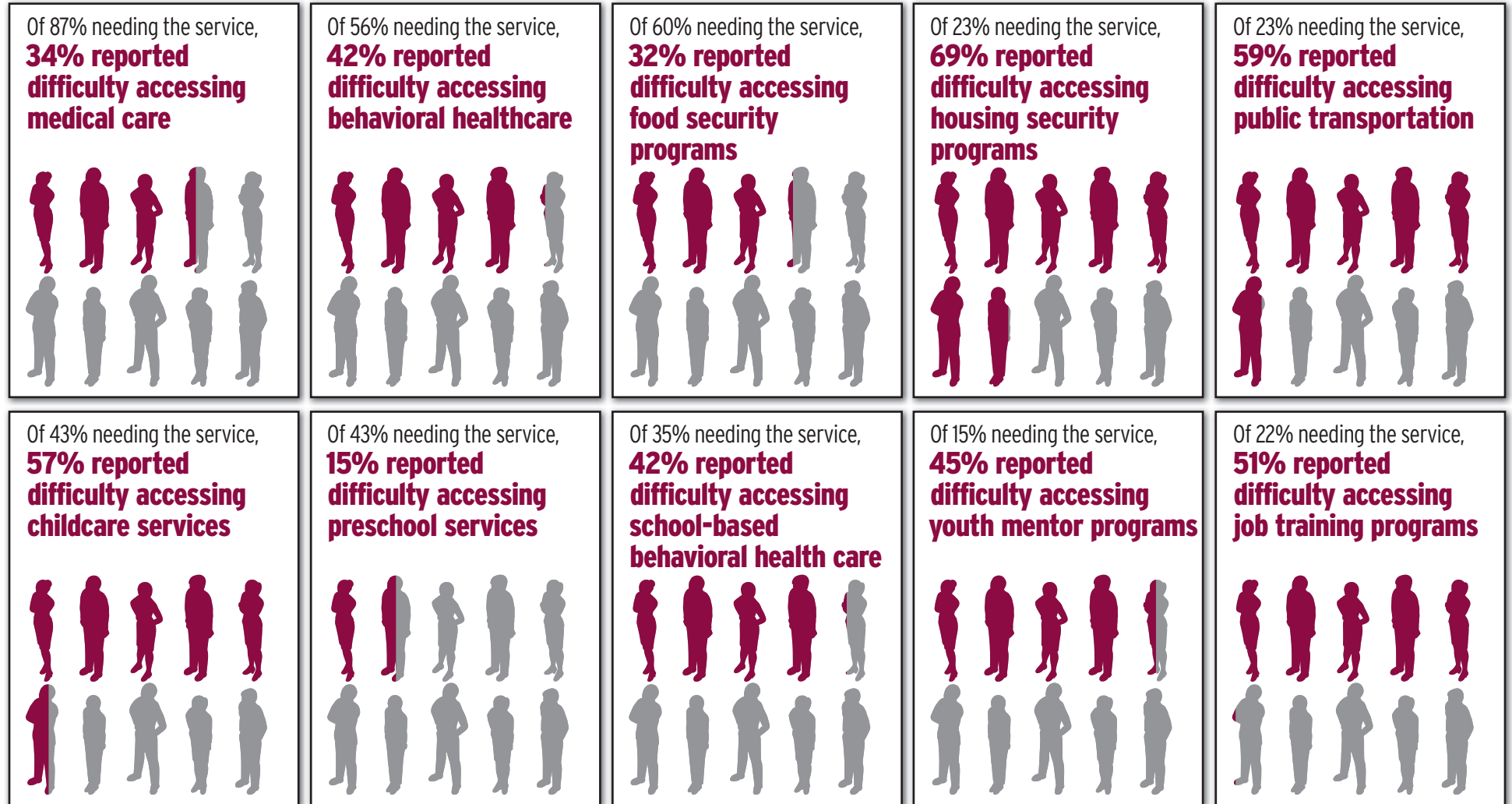


100% Otero County Survey Report: Identifying Barriers to Vital Services, 2024

This survey asked residents about their access to the ten vital services for surviving and thriving—including timely health care. This report serves to identify barriers to the services that keep residents healthy, safe, self-sufficient and empowered to thrive.



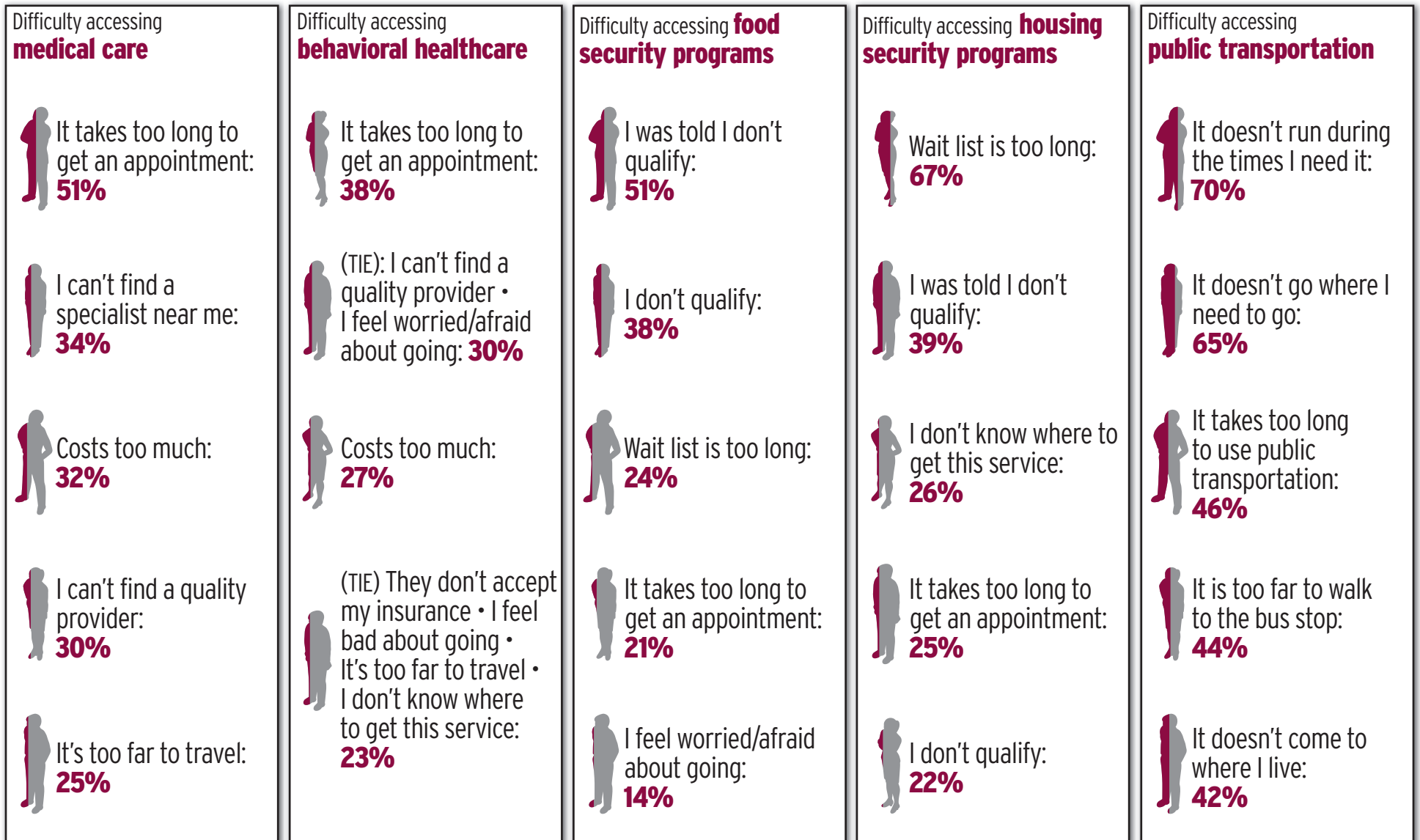
The 100% New Mexico Initiative's Vision and Mission

Our mission is to ensure that 100% of our county's children, students and families can access the ten vital services for surviving and thriving. To achieve this goal, we use the 100% Community model to identify service barriers and build local organization's capacity to address needs and promote health, safety, resilience and self-sufficiency.



BE BOLD. Shape the Future.
College of Agricultural, Consumer and Environmental Sciences
 Cooperative Extension Service
 Extension Family and Consumer Sciences

The 100% Otero County Initiative's survey identifies the top barriers to accessing 10 vital services for surviving.

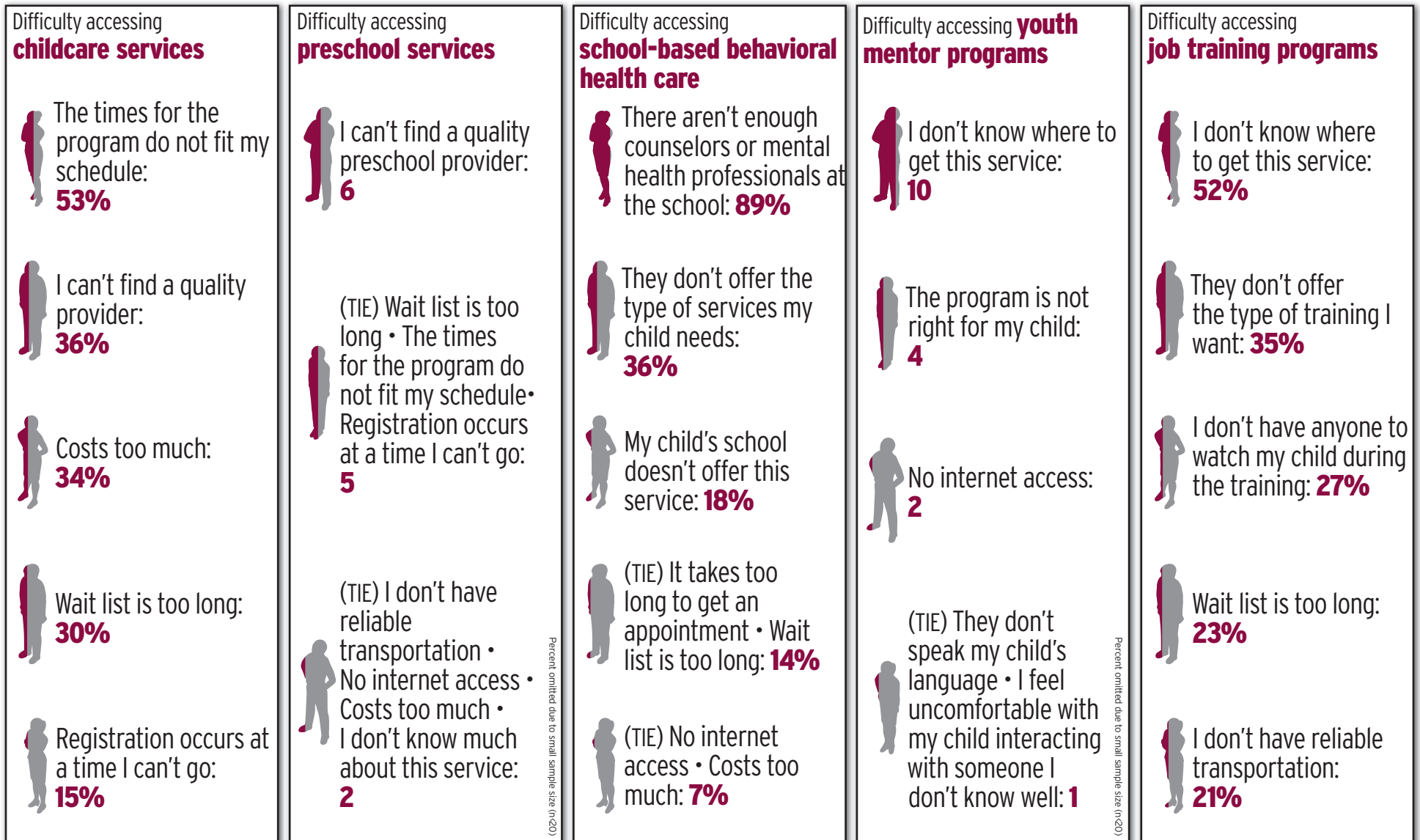


Services for survival can literally mean the difference between quality of life or trauma, illness, injury, and fatalities. Today, families face barriers to services.



BE BOLD. Shape the Future.
College of Agricultural, Consumer and Environmental Sciences
 Cooperative Extension Service
 Extension Family and Consumer Sciences

The 100% Otero County Initiative's survey identifies the top barriers to accessing 10 vital services for thriving.



The services for thriving strengthen the health, safety, education, and quality of life of children, students and families. Today, those services may be out of reach.



BE BOLD. Shape the Future.
College of Agricultural, Consumer and Environmental Sciences
 Cooperative Extension Service
 Extension Family and Consumer Sciences

How the 100% Otero County Initiative Survey was conducted.

The 100% Otero Team launched the survey between January and August 2024. The surveys were available in Spanish and English, online and on paper. The county organizers promoted the survey through personal contacts, community events, and locations providing services, such as medical and behavioral health centers and food distribution sites. The survey was also distributed through school district, city, and county outreach methods. An initial sample of 553 survey responses was collected (537 online and 16 on paper). After eliminating responses from those who did not consent, did not answer any service-related questions, or reported living in another county, the final sample consists of 498 valid respondents (483 online and 15 on paper). The survey aims to understand the level of need and access to basic surviving and thriving services. We hope the results serve as a jumping-off point, providing insight into areas that may merit further exploration.

Respondents' Neighborhood of Residence

Neighborhood	N	Percent	Neighborhood	N	Percent
Alamogordo	328	66%	Holloman	6	1%
Tularosa	59	12%	Air Force Base		
Mescalero	30	6%	Cloudcroft	5	1%
Chaparral	24	5%	Other, please specify:	4	1%
La Luz	17	3%	High Rolls	4	1%
Boles Acres	11	2%	Bent	1	0%
Mayhill	7	1%			

100% of Otero County's residents can thrive.

The groundbreaking 100% Otero County initiative is working to ensure that all families in the county have access to the 10 vital services for surviving and thriving:

- Medical/Dental Care
- Behavioral Healthcare
- Food Security Programs
- Housing Security Programs
- Transportation
- Parent Supports
- Early Childhood Learning Programs
- Community Schools with family services
- Youth Mentor Programs
- Job Training

100% Otero is showing our commitment to 100% of our families by building 10 action teams around the 10 vital services that determine the quality of life for residents. We are making a system-wide change, creating a seamless system of family services where 10 service sectors are working in alignment with local networks of organizations. We are transforming the adverse social determinants of health into the positive determinants by ensuring vital services.

For more information about the 100% Otero initiative and the survey results, visit www.100nm.org/Otero



BE BOLD. Shape the Future.
College of Agricultural, Consumer and Environmental Sciences
 Cooperative Extension Service
 Extension Family and Consumer Sciences